

 **2017-2018**
Registration & Scheduling

Christiansburg Middle School

* Key factors that impact Master Schedules

* Student needs

(Required courses vs student choices)

* Staffing

(Who is assigned to CMS and what are they qualified to teach)

* Time issues

(How do we divide up the day, itinerant teachers, district/state guidelines)

*Registration Process

- * CMS School Counselors (Mrs. Brugh and Mrs. Martin) meet with students to discuss class selection.
- * The bulk of a student's schedule is predetermined. Core classes: Math, English, Science, Social Studies.
- * Provide information about Elective Courses and the process for selection.

*Registration Process

- * Each student will complete a Course Registration Form. These forms require a parent's signature to be valid.
- * Student selections are used to build a class schedule that best fits student's needs and works within the master schedule.
- * We cannot guarantee that a student receives his/her first choices.
- * Families receive a copy of the student's schedule.

* Math Placements

- * Essentially all students will take a math class each year at CMS.
- * There are a variety of math classes available at each grade level.
- * Students are assigned a math placement based upon performance data from their previous year of math instruction.
- * We are happy to discuss your concern if you believe your child has been placed incorrectly.

* Remediation Courses

- * The Virginia Department of Education requires that school divisions provide academic interventions for student who have not been successful on SOL Tests.
- * Students needing additional support in Math or Reading will have intervention classes (Math 180 or Reading 180) in place of non-core courses whenever available.
- * Obviously, this is disappointing to students.

* Intervention/Extension Period

- * Every student at CMS has an IE Period.
- * 40 minutes in length.
- * An opportunity for re-teaching and enrichment.
- * Those who need extra support can get it here, or students will choose from a menu of options.
- * We expect to change IE Periods periodically.
- * Also an opportunity for school-wide initiatives like practice writing prompts and Family Life Education.
- * It is not a “class” and therefore grades are not awarded.

* Schedules

- * Full-year schedule (180 days) - the student has this class every day throughout the school year.
- * Semester schedule (90 days) - the student has this class every day for 18 weeks (Aug-Dec or Jan-Jun).
- * A/B schedule (90 days)- the student has this class every other day throughout the school year.
- * 6th Grade Art/Family & Consumer Science Combo (45 days) - the student has one marking period of each subject.

*Timeline

- * Jan 17 - Information Night
- * Jan 17-19 - Counselors at Elementary Schools
 - * CES - 17th
 - * FBE - 18th
 - * BES - 19th
- * By Jan 24 - Rising 6th Grade Registrations returned
- * By Feb 10 - All registration information complete
- * Apr 12 - Rising 6th graders visit CMS during the school day
- * Families to receive student schedules prior to start of school

* Grade-level details, 6th

- * All rising 6th graders are required to document TDAP immunization prior to admission at CMS.
- * Virtually every 6th grader will take Digital Input Technology (keyboarding) as part of their core courses.
- * Keyboarding will be paired with a non-core course option.
- * The A/B Schedule pertains to 6th graders in Band and Chorus only.

* Grade-level details, 7th

- * Band and chorus become year-long options.
- * Have the opportunity to take Algebra 1 for a high school credit.

* Grade-level details, 8th

* Available credit courses:

Algebra 1

Geometry

Foreign Language (Spanish or French)

Computer Applications

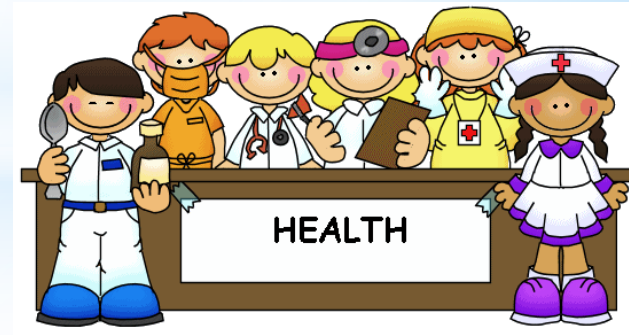
Agriscience

Manufacturing Systems 1

Earth Science



Career Cruising



*Our Goals:

- *To provide our students with the skills necessary for success in high school,
- *To provide our students with opportunities to explore areas of interest,
- *To provide appropriately-challenging coursework, and
- *To maximize the personnel, materials, and time resources provided by the division and Commonwealth.

* Available to help

- * CMS Main Office: 540-394-2180
- * CMS Guidance Office: 540-394-2185
- * Webpage: <http://www.mcps.org/CMS/>